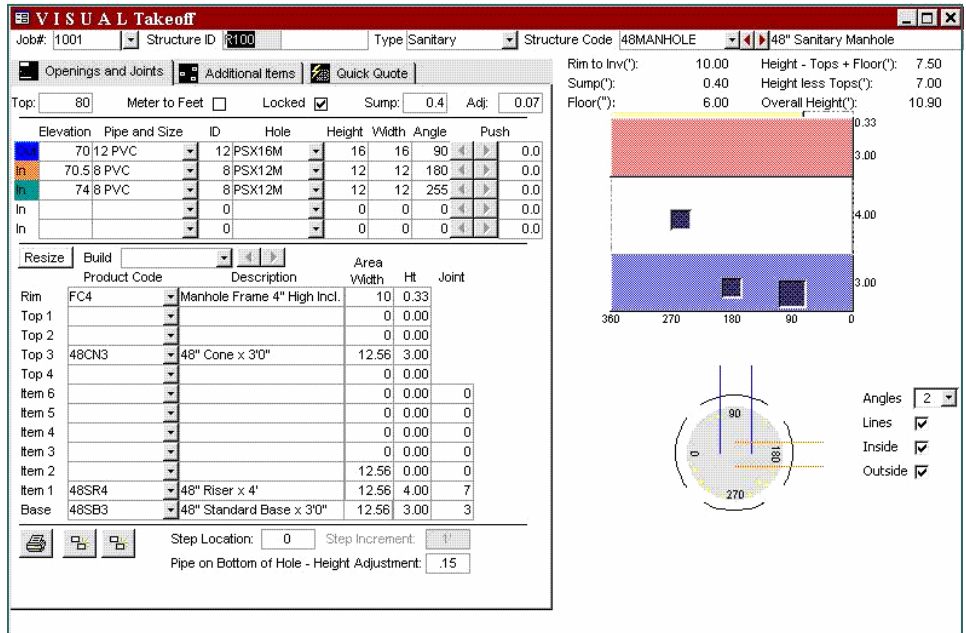


Visual Takeoff Manager

- Automatic Resize Feature
- Automatic Build Feature
- Manual Build Feature
- View Structure while Building
- Structure Type Defaults
- Job Defaults
- Copy Structure Feature
- Automatic Loading of Kit Items
- Miscellaneous Item Additions
- Price Allocation Feature
- Corner Hole Calculation
- Corner Hole Push Feature
- Hole Proximity Warning
- Numerous Pricing Methods
- Unlimited Price Levels
- Job Discount Feature
- Structure Type Discount Feature
- Production Drawings One Per Page, Two Per Page, Three Per Page, Six Per Page
- Print Quotes/Sales Orders by Structure/Product Detail, Structure Summary, or Structure Type Summary
- Quote Any Type of Product



The Visual Takeoff module featured in Titan II is the most advanced and efficient way to perform takeoffs and piecing up structures. A picture of the stack and a plan view displays right next to your takeoff to give you a visual representation of the structure you are working on. With its flexibility you can piece and re-piece up structures until it fits your needs by changing one piece at a time or by using the new Autobuild feature that will piece the entire structure at once. Autobuild will allow you to use completely different configurations of the entire structure just by clicking a button. Once the structure is pieced up, it automatically loads those products into your sales order or quote.

Sales orders and quotes can be printed in detail or summary format. Production drawings are available in many different styles and can be printed by job or in coordination with the production schedule.

TITAN II PRECAST MANAGEMENT SYSTEM

Muka Development Group, LLC
 303 West Main Street
 Freehold, NJ 07728

Phone: 732-866-8686

Fax: 732-866-8654

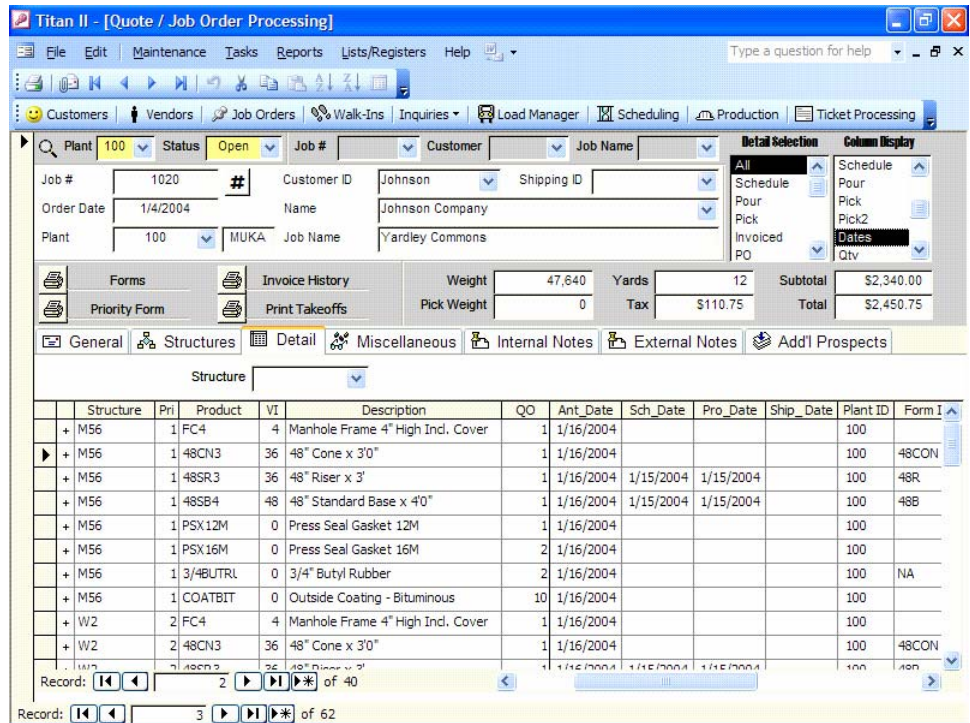
E-mail: mukagroup@cs.com

Web: www.muka.net



Job Order Tracking Features

- Feature Rich Job Inquiry
- View Quotes, Not Accepted Quotes, Open Job Orders, Pending Orders, Completed Orders
- Unlimited Price Levels
- Specific Job Pricing
- Job Discount Features
- Track Structures/Products
- Track Price/Yards/Weights
- View Customer Anticipation Dates
- View Schedule Dates
- View Production Dates
- View Ship/Invoice Dates
- View Product Quantities
- Record Job Notes
- Multi-plant



Now with Titan II Precast Management System, anyone in the office can answer customer questions instantly. No more running around looking for job folders or running out to the yard looking for pieces.

Informative inquiry screens centralize all critical job information empowering everyone in the office.

Through the use of customer "anticipation dates", "schedule dates", "production dates", "pick dates" and "shipped dates", Titan II brings a wealth of information to the screen. Job status, pricing, structures, products and drawings are all at your fingertips.

Titan II will not only improve customer service, it will improve overall company profitability.

TITAN II PRECAST MANAGEMENT SYSTEM

Muka Development Group, LLC
303 West Main Street
Freehold, NJ 07728

Phone: 732-866-8686

Fax: 732-866-8654

E-mail: mukagroup@cs.com

Web: www.muka.net



Production Scheduling Features

- Track/Schedule Specials
- Track/Schedule Inventory
- Schedule by "Form" Availability
- Monitor Dispatch Activity
- Quantity On Hand Warnings
- Release Items for Production
- Identify Scheduling Conflicts
- Create Multiple Production Departments
- View Customer Anticipation Dates
- View Dispatch Dates
- Schedule Weeks in Advance
- Print Production Schedule by Department
- View Estimated Man-hours Required by Department
- Many Customer/Job Inquiry Screens
- Export Information to Excel or Word

Job#	Customer	Job	Structure	Description	Subform	Sch_Date	Ant_Date	Picked	Wa	Plant
1206	Johnson Com	Fort Point	s2	48" Standard Base X 4 with Hole	4' High	Thu, 1/22/04	Tue, 2/10/04	Mon, 1/26/04		100
1164	Lake Group C	Wells West Side J	s2	48" Standard Base X 4 with Hole	4' High	Fri, 1/23/04	Thu, 2/12/04			100
1037	Wells South C	Tinton Falls	S1	48" Standard Base X 3 with Hole	3' High	Thu, 1/22/04	Fri, 2/13/04			100
1037	Wells South C	Tinton Falls	S2	48" Standard Base X 3 with Hole	4' High	Fri, 1/23/04	Fri, 2/13/04			100
1037	Wells South C	Tinton Falls	S3	48" Riser X 3 with Hole	Coring		Fri, 2/13/04			100
1037	Wells South C	Tinton Falls	S3	48" Standard Base X 3 with Hole	4' High	Thu, 1/22/04	Fri, 2/13/04			100
1037	Wells South C	Tinton Falls	S4	48" Standard Base X 3 with Hole	3' High		Fri, 2/13/04			100
1037	Wells South C	Tinton Falls	S6	48" Standard Base X 3 with Hole	3' High		Fri, 2/13/04			100
1037	Wells South C	Tinton Falls	S6	48" Riser X 3 with Hole	3' High		Fri, 2/13/04			100
1160	Kelly Constru	Kelly Job 5	s3	48" Standard Base x 4'0"	4' High	Fri, 2/13/04	Fri, 2/13/04		A	100
1165	Lake Group C	Mount East Phase	h3	48" Standard Base X 4 with Hole	4' High	Fri, 2/13/04	Mon, 2/16/04		A	100
1165	Lake Group C	Mount East Phase	h2	48" Standard Base X 4 with Hole	4' High	Fri, 2/13/04	Mon, 2/16/04		A	100
1165	Lake Group C	Mount East Phase	s1	48" Standard Base X 2 with Hole	2' High		Fri, 2/13/04			100
1147	Shell Develop	Stickel Developme	S3	48" Standard Base X 4 with Hole	4' High		Mon, 2/16/04			100
1147	Shell Develop	Stickel Developme	S2	48" Standard Base X 4 with Hole	4' High		Mon, 2/16/04			100
1147	Shell Develop	Stickel Developme	S1	48" Standard Base X 4 with Hole	4' High		Mon, 2/16/04			100

Titan's production scheduling features were specifically designed for the Precast industry. The challenges of tracking and scheduling "special" items as well as stocked items becomes considerably simpler using Titan II.

Various quantity, capacity and conflict warnings all aid in helping the production scheduler fulfill his/her day to day requirements.

Through the use of "Releasing Items", "Customer Anticipation Dates" and "Dispatch Dates", Titan enables the production scheduler to view into the future and avoid problems before they occur.

Plant efficiency and customer service can be dramatically improved through the use of the Titan II Precast Management System.

TITAN II PRECAST MANAGEMENT SYSTEM

Muka Development Group, LLC
303 West Main Street
Freehold, NJ 07728

Phone: 732-866-8686

Fax: 732-866-8654

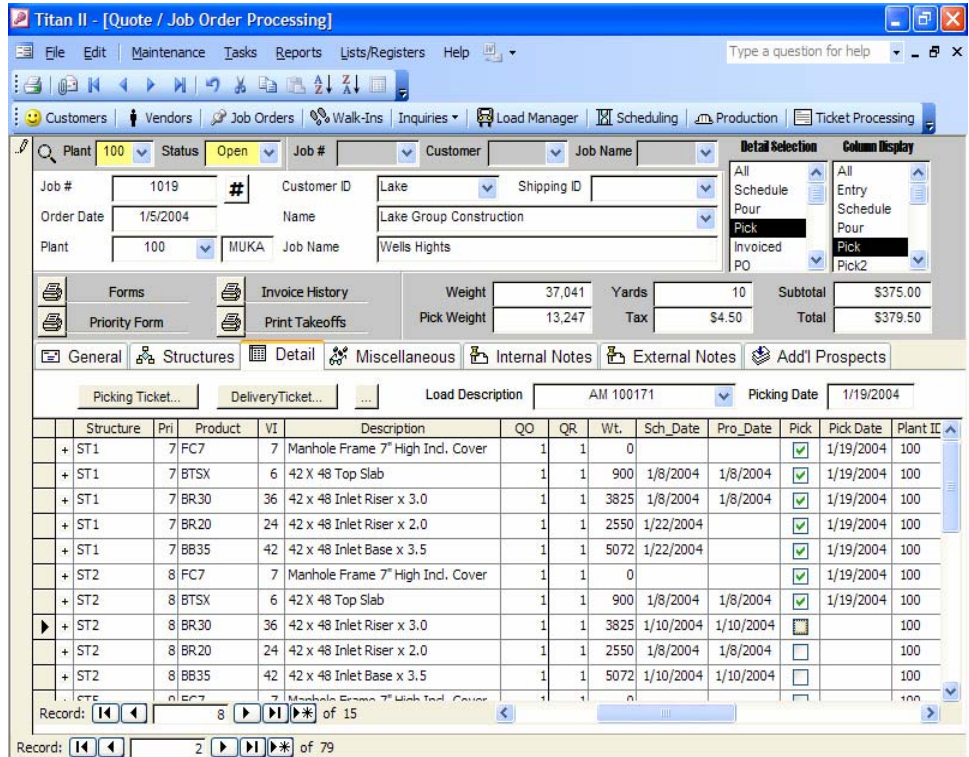
E-mail: mukagroup@cs.com

Web: www.muka.net



Dispatching Features

- View Job, Structure and Product Status
- Easily Create Picking/Load Tickets
- View Load Weight while Picking
- Pick Weeks in Advance
- Automatically Create Delivery Tickets and Invoices from Picking Tickets
- Track Specials
- Monitor Production Activity
- Share Dispatch Information with Production Scheduler
- Identify Inventory Shortfalls
- View Shipping Schedule
- Identify Shipping Conflicts
- View/Print Drivers Schedules
- Export Information to Excel or Word



Titan enables the production scheduler and dispatcher to act as a cohesive unit.

By sharing information through Titan, both production and dispatch personnel are given the tools to achieve efficiencies that would otherwise be unobtainable using a manual system.

Through the use of many features created specifically for the dispatcher, the balance of client expectations and production resources can be managed more effectively.

With complete job information at everyone's fingertips, the continuous task of answering customer inquires can be distributed throughout the office, while, the actual time of dispatching products and managing trucks and drivers will be considerably reduced.

TITAN II PRECAST MANAGEMENT SYSTEM

Muka Development Group, LLC
303 West Main Street
Freehold, NJ 07728

Phone: 732-866-8686

Fax: 732-866-8654

E-mail: mukagroup@cs.com

Web: www.muka.net



Purchase Order Processing and Inventory Management Features

- Multi-plant Capabilities
- Track Stock Items
- Track Specials
- Track Finished Goods
- Track Raw Materials
- Establish Minimum and Maximum Quantities
- Robust Inventory Inquiry Screens
- Various Inventory Quantity Warnings
- Create/Track Bill of Materials
- Tight Integration with Job Processing, Production, Purchasing and Accounts Payable
- Track Product Height, Weight, Product Line and Associated Kit Items
- Create POs Automatically
- Unit of Measure Conversions
- Track Vendor Item Numbers, Pricing and Unit of Measure
- Export Information to Excel or Word

TITAN II PRECAST MANAGEMENT SYSTEM

Muka Development Group, LLC
303 West Main Street
Freehold, NJ 07728

Phone: 732-866-8686

Fax: 732-866-8654

E-mail: mukagroup@cs.com

Web: www.muka.net

The screenshot shows the Titan II software interface for a Product Inquiry. The window title is "Titan II - [Product Inquiry]". The menu bar includes File, Edit, Maintenance, Tasks, Reports, Lists/Registers, and Help. The toolbar contains various navigation and action icons. Below the menu bar, there are several tabs: Customers, Vendors, Job Orders, Walk-Ins, Inquiries, Load Manager, Scheduling, Production, and Ticket Processing. The main area is a data table with columns for Product ID, Plant, Type, Product Line, Vendor, Part Type, and Inventory. The table is currently displaying a list of products with their respective quantities and status.

Product ID	Plant	Product Name	QOH	Picked	Ant. Qty	Released	SO	Req_BOM	PO	Min. Qty	Availk
24AR4	100	24" Adjustment Ring 4"	12	9	16	17	153	0	0	0	
24AR6	100	24" Adjustment Ring 6"	3		12	13	48	0	0	0	
3/4BUTRUB	100	3/4" Butyl Rubber	98		135	137	389	0	73	1	
34CMB	100	34" High Concrete Median Barrier	0	5	30	30	261	0	0	0	
428OR3	200	42" RCP X 8' Length, Oring, Clas	0		1	1	1	0	1	0	
48CIT30	100	48" Flattop Collar 6" w/ 30" Hole	3	1	8	8	33	0	0	0	
48CIT830	100	48" Flattop Collar 8" w/ 30" Hole	0		1	1	3	0	0	0	
48CN3	100	48" Cone x 3'0"	1	31	110	110	359	0	0	0	
48SB3	100	48" Standard Base x 3'0"	3	3	14	14	26	0	0	0	
B2X3X0	100	INLET BASE (2' X 3')	0		1	1	2	0	0	0	
B2X3X1	200	Inlet Base (2' X 3') X 1'	0		1	1	1	0	0	0	
B2X3X2	100	INLET BASE (2' X 3') X 2'	0		1	1	1	0	0	0	
B2X3X3	100	INLET BASE (2' X 3') X 3'	0		4	4	4	0	0	0	
B2X3X4	100	INLET BASE (2' X 3') X 4'	1		3	3	3	0	0	0	
BR20STK	100	42 X 48 Inlet Riser x 2.0	0	1	3	3	6	0	0	0	
COATBIT	100	Outside Coating - Bituminous	3		640	647	1,815	0	0	0	
FC4	100	Manhole Frame 4" High Incl. Cov	42	32	116	116	360	0	50	0	
FC7	100	Manhole Frame 7" High Incl. Cov	5	13	34	34	86	0	20	0	
FCB6	100	Foreign Casting Type B - 6"	0	1	1	1	3	0	11	0	
KNS10616AWP	100	Kor N Seal Gasket S106-16AWP	0		5	5	36	0	0	0	

Titan II was built with scores of features to enable the Precaster to successfully manage inventory while improving customer service.

Inventory turnover can be dramatically improved by Titan's simplified processes specifically designed for the Precaster. Dispatch and production processing, bill of materials management, and purchase order processing are all tightly integrated giving everyone accurate, timely information.

Customer service can be greatly enhanced by the many customer and job inquiry screens available in Titan II.

Inventory profitability can be tightly monitored using the many analytical reports available in Titan II.

By sharing vital, accurate information throughout the office, Titan II gives precasters the ability to meet customers' expectations, effectively manage production resources and retain company capital.



Accounts Receivable Module

- Customer Maintenance
- Invoice Registers
- Cash Receipts Registers
- Unlimited Bank Accounts
- Aged Receivable Reports
- Receivables by Sales Rep
- Receivable Report with Collection Notes
- Payment Analysis Reports
- Walk-In Screen
- Customer Inquiry Screen
- Collection Notes Tracking
- Customer Statements
- Finance Charge Feature
- Customer Status Feature
- Custom Fields
- Export Information to Excel or Word

Customer Transaction Inquiry

Customer ID: Lake
Company: Lake Group Construction

Balance Due: \$7,376.00
Current: \$1,709.92
30: \$5,666.08
60: \$0.00
90: \$0.00

Invoice	Terms	Invoice Date	Subtotal	Tax	Total	Balance	SO	Job
16222	NET 30	2/3/2004	\$1,782.00	\$0.00	\$1,782.00	\$1,782.00	0	
16238	NET 30	1/28/2004	(\$68.00)	(\$4.08)	(\$72.08)	(\$72.08)	1019	Wells Hights
16234	NET 30	1/19/2004	\$470.00	\$26.70	\$496.70	\$496.70	1002	River Side
16219	NET 30	1/15/2004	\$1,585.00	\$90.60	\$1,675.60	\$1,675.60	1019	Wells Hights
16227	NET 30	1/14/2004	\$1,950.00	\$109.50	\$2,059.50	\$2,059.50	1002	River Side
16213	NET 30	1/12/2004	\$1,357.34	\$76.94	\$1,434.28	\$1,434.28	1019	Wells Hights

Record: 1 of 6

Titan's Accounts Receivable module provides many tools for tracking and managing customer account information. Intuitive features coupled with informative reporting are the hallmark of the Accounts Receivable module.

By simply generating invoices directly from delivery tickets, the accounts receivable process starts off swift and accurate. It is followed by the ability to print customer statements in multiple formats, while easily recording and tracking customer collection notes. Finishing strong, the accounts receivable process ends with user-friendly cash entry and customer inquiry screens.

Comprehensive and powerful, the Accounts Receivable module is a critical process within the Titan II Precast Management System.

TITAN II PRECAST MANAGEMENT SYSTEM

Muka Development Group, LLC
303 West Main Street
Freehold, NJ 07728

Phone: 732-866-8686

Fax: 732-866-8654

E-mail: mukagroup@cs.com

Web: www.muka.net



Accounts Payable Module

- Vendor Maintenance
- Invoice Register
- Check Register
- Unlimited Bank Accounts
- Aged Payable Reports
- Purchasing Analysis
- Integration with PO System
- Manual Check Writing
- Invoice Payment Processing
- Check Batch Printing
- Customizable Vendor Fields
- Vendor Default Accounts
- Vendor Lists and Labels
- Purchase Clearing Accounting
- Integration with General Ledger
- Export Information to Excel or Word

**TITAN II PRECAST
MANAGEMENT SYSTEM**

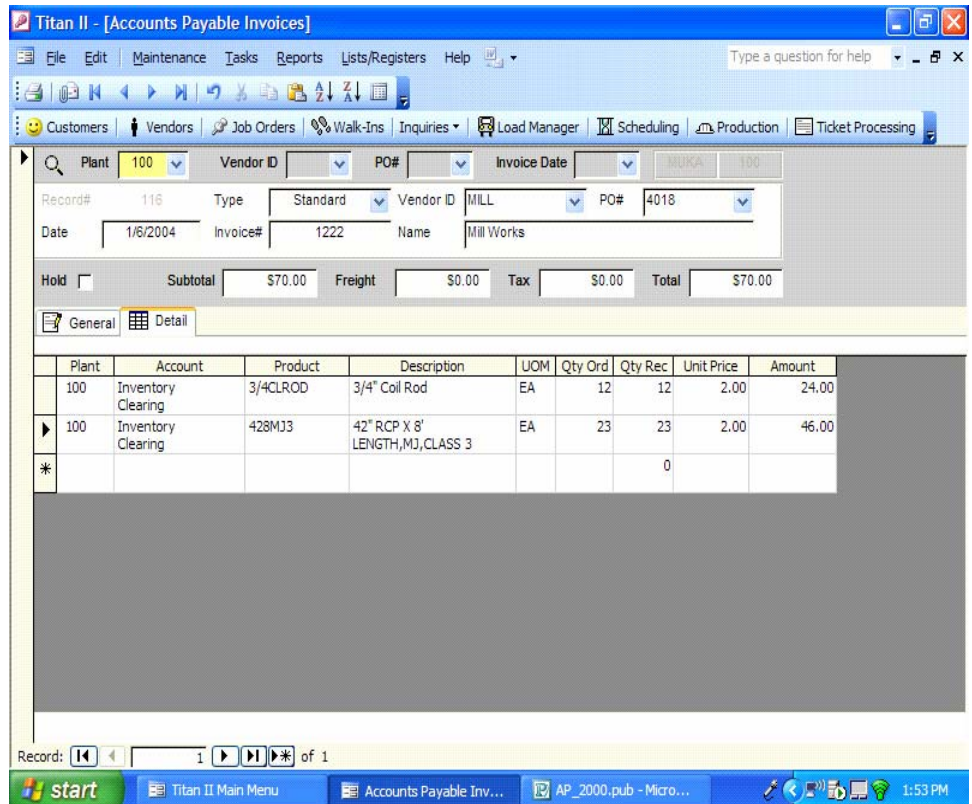
Muka Development Group, LLC
303 West Main Street
Freehold, NJ 07728

Phone: 732-866-8686

Fax: 732-866-8654

E-mail: mukagroup@cs.com

Web: www.muka.net



The Accounts Payable module provides all the tools for managing your expenditures. With tight Purchase Order integration, validating vendor invoices is no longer a cumbersome chore, while selecting invoices for payment is quick and easy.

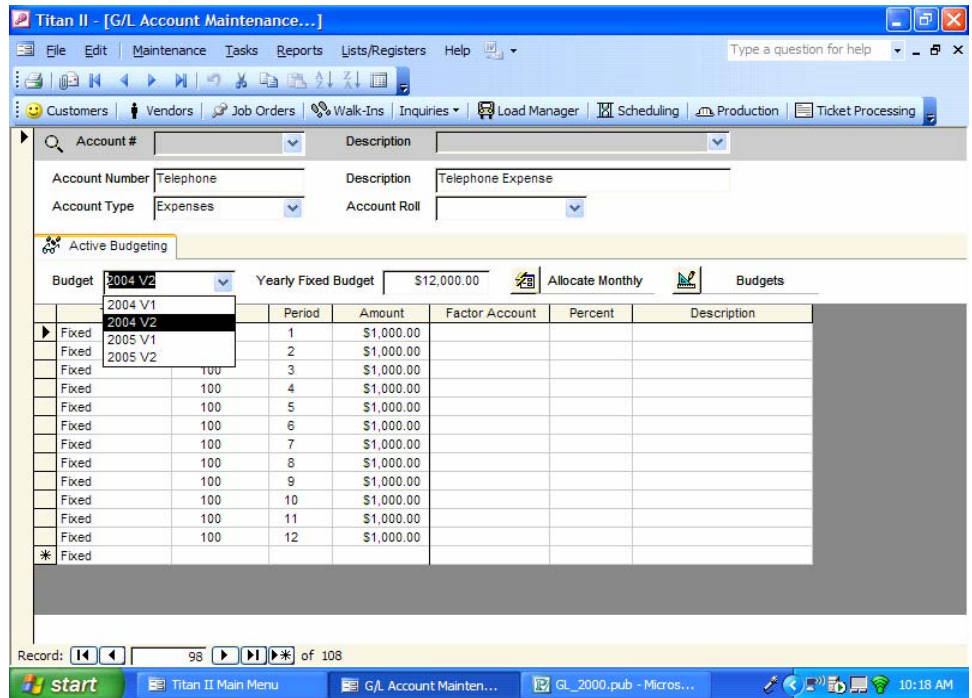
Powerful, yet simple to use Accounts Payable offers the ability to process checks individually or in a batch and offers many reports to highlight key financial information.

While the Accounts Payable module can be used standalone, coupled with the rest of the Titan II Precast Management System it is sure to add to your business insight and improve your decision-making.



General Ledger Module

- Chart of Accounts
- Active Budgeting
- Unlimited Budgeting
- Income Statements
- Balance Sheets
- Statement of Cash Flow
- Flexible/Easy Financial Report Writer
- General Ledger
- Trial Balance
- Working Trial Balance
- Transaction Journals
- Transaction Journal by Plant
- 20 Digit Account Number
- Export Information to Excel and Word



The General Ledger module ties together all aspects of Titan II for a complete financial picture of your business. Accounts receivable, accounts payable, inventory receipts and production processing are all tightly integrated with the General Ledger to give you a clear view of the past. Our “Active Budgeting” feature will give you a clear view of the future.

With the ability to create unlimited budgeting scenarios, the “Active Budgeting” feature enables you to create budgets based on current and projected sales figures. “Percent of Actual Sales budgeting” as well as “Fixed budgeting” give you the tools to create truly flexible and realistic budgets.

Combining ease of use with power and flexibility, Titan’s General Ledger module will provide you with valuable business insight to lead you to the next level.

TITAN II PRECAST MANAGEMENT SYSTEM

Muka Development Group, LLC
 303 West Main Street
 Freehold, NJ 07728

Phone: 732-866-8686

Fax: 732-866-8654

E-mail: mukagroup@cs.com

Web: www.muka.net



Customer Support/Professional Services

- Installation Services
- Data Conversion
- Product Maintenance Setup and Consultation
- Structure Maintenance Setup and Consultation
- Pipe Maintenance Setup
- Online Training
- Prompt Phone Support
- Prompt Online Support
- Online Program Updates
- Webinars
- System Integration
- Quarterly News Letter



Along with the Titan II Precast Management System, Muka Development Group offers unmatched customer support and professional services.

We begin by converting/importing your data into Titan, followed by product and structure setup. Installations are completed remotely and training sessions can begin promptly. Rather than overwhelming Titan trainees with long half day or full day training sessions, we provide short and focused sessions performed by professionals with precast experience. Immediate online or phone support is always available.

We, at Muka Development Group, take ownership of every installation and strive to have every client as a strong reference for the Titan II Precast Management System.



TITAN II PRECAST MANAGEMENT SYSTEM

Muka Development Group, LLC
303 West Main Street
Freehold, NJ 07728

Phone: 732-866-8686

Fax: 732-866-8654

E-mail: mukagroup@cs.com

Web: www.muka.net